

# WINNEBAGO COUNTY MASTER GARDENER NEWSLETTER

## MISSION STATEMENT:

Our purpose is to provide horticultural education, community service & environmental stewardship for our community in affiliation with the University of Wisconsin Extension Program.

[www.winnebagomastergardeners.org](http://www.winnebagomastergardeners.org)

1-920-232-1986

## SEPTEMBER 2007

### COMMITTEES

Education		
Roy Anne Moulton	886-1283	
Education – Meetings		
Audrey Ruedinger	231-5745	
Event Planning		
Kathy Daniels	233-0410	
Historian		
John Procknow	429-4797	
Membership		
Chris Bellin	233-4968	
Newsletter		
Linda Baeten	232-1224	
State Rep		
Bob Kosanke	231-1873	
SOP & Bylaw Committee		
Stan Meyer	725-6486	
Sunshine		
Judy Harms	688-5523	
Liz Ginke		
Time Keeper		
Shelley Aaholm	731-8570	
Trip Coordination by Education Committee & Roy Anne Moulton	886-1283	

### OFFICERS

President		
Linda Tobey	734-2264	
Vice President		
Susan Bohn	685-0427	
Secretary		
Linda Werner	725-8168	
Treasurer		
Marge Bolding	233-8668	

### SANCTIONED CORE PROJECTS

Community Gardens		
Ruth Freye	734-5978	
Education and Control of Invasive Species		
Lawanda Jungwirth	836-2878	
Audrey Ruedinger	231-5745	
Farmers Market		
Dorothy Gayhart Kunz	233-8468	
Janet Priebe	233-1898	
Paine Gardens		
Pat Behm	410-3290	
Bob Potter	233-3349	
Park View Cutting Garden		
Rob Robinson	231-1162	
Park View Vegetable Garden		
Sue Steinhilber	235-1031	
Al & Judy Harms	688-5523	
Park View Flower Arranging		
Marlene Miller	231-4339	
Plant Health Advisors @ UWEX		
Curt Reese	426-4992	

### OPEN / CLOSED SANCTIONED PROJECTS

Community Education		
Dorothy Kunz	233-8468	
Linda Tobey	734-2264	
Compost		
Stanley Meyer	725-6486	
Lincoln School		
Janet Priebe	233-1898	
Karen Wedde	235-7159	
Park View Prairie		
Ken Hawk	426-1691	
Refreshments		
Linda Loker	426-1435	

**Business Meeting  
September 11, 2007  
6:15 PM**

**All members welcome to attend  
WELCOME BACK!**

Dear Fellow Gardeners,

Aren't the rain and cool temps wonderful? Seeing that I have only been home for less than a day, I can't say that I know how it has been here for the last 2 weeks, but if it is like any place I visited in the West it has been hot and dry until last weekend. We ran into drought conditions from here to Idaho the first week. Friday night it began to rain and we were into tornadoes and floods in South Dakota and Minnesota. The same theme seemed to be everywhere thank god it's raining, but we don't want it all at one time.

Well there isn't much for me to say until I get my bearings. I just wanted you all to know that I am back and ready to go. Right now I am having a little email problem. It seems my server forgot who I am and won't let me in to get my email, but I have my computer guy on the problem and it should be working soon.

We are having a Master Gardener membership business meeting September 11<sup>th</sup>. We have lots to talk about and a special door prize so please come and join us.

I'll see you in the Garden  
Linda



## MEETING MINUTES

### Master Gardener Board Meeting

August 7, 2007

Coughlin Center, 6 p.m.

Members present: Kathy Daniels, Sue Bohn, Marge Bolding, Bob Potter, Roy Anne Moulton, Ken Hawk, Linda Loker, Audrey Ruedinger, Stanley Meyer

The meeting was called to order by Vice President Sue Bohn.

**Treasurer's Report:** Marge Bolding reported a July ending balance of \$10,524. Money continues to come in from cookbook and worm casting sales. There was no cost for the July newsletter as it was emailed for the first time, a savings of \$57. A delayed payment of \$200 was paid out for the 2006 Lincoln School project in July. Only a few bills for 2007 projects have been submitted so far. Stanley Meyer made a motion to accept the treasurer's report as presented. Bob Potter seconded the motion. Approved. Sue Bohn suggested the possibility of investing some of the balance. Marge will call Madison to inquire if the state Master Gardener program has rules against investing MG funds.

**Secretary's Report:** Ken Hawk made a motion to approve the June 5, 2007 board minutes as printed in the newsletter. Marge seconded the motion. Approved.

### OLD BUSINESS

**Nomination Committee:** Bob reported that no one has yet accepted the nomination for the two-year term as president and asked for additional suggestions. Barb Kuhn has agreed to be nominated as treasurer. The possibility of co-presidents was raised as a number of people have been reluctant to tackle such a big job. Bob and Audrey Ruedinger will bring up the suggestion at the September board meeting and talk about the job description

**Annual Tree Planting:** Audrey Ruedinger and Stan Meyer looked into tree programs in Neenah and Winnebago County and reported on them. Omro doesn't have a tree program. Linda Werner made a motion to plant the 2007 tree in the Winnebago County Park. Bob seconded the motion. Approved. The cost is \$150. Audrey and Stan will select the tree. A plaque will read: Winnebago County Master Gardener Association 2007.

**Application for Individual Project:** Shelley Aaholm's request to work on the gardens at the First Congregational Church was approved. No funds were requested.

**Project Activities Update:** Stan reported that invasive wild parsnips are blooming. They look like Queen Anne's lace, but are yellow. The sap burns and creates a skin rash. Ken said some anti-invasive groups have been successful in working with big box stores like WalMart to stop selling invasive species. Bob reported that a number of the most recent class members are now working at the Paine to get their hours in. The biggest task is to keep the gardens watered.

## NEW BUSINESS

**MG Advisor Status:** A *Northwestern* article indicated the advisor position will be filled, but not until the end the year. The position focus will probably continue to be on agriculture as opposed to horticulture. Sue Bohn will ask the UW Extension office for a copy of the article to put in the MG newsletter.

**County Fair:** The fair opened at 5 p.m. on August 7. The MG booth will be staffed daily from 4 to 8 p.m., the busiest hours. If other MG would like to take other times to get in their hours, they may.

**Christmas Party:** Kathy Daniels reported that the new owner of the former Gardenview Restaurant cannot accommodate the MG party on the first Monday in December. She checked into availability and prices at several other restaurants. Ken made a motion to have the party at Robbins on December 3. Audrey seconded. Approved. Kathy will check menus and pricing in more detail and report back at the September board meeting.

**MG Classes:** Roy Anne Moulton expressed concern that a profit was made from last year's classes. She will check with Curt Reese, who kept track of all of the expenses, to get a more complete picture of the class budget. Last year, the MG advisor was in charge of all of the classes. As there is currently no advisor, the Education Committee would need to make all of the arrangements to offer the basic course. There is no facility in the county that has the right equipment and enough room to offer the satellite sessions out of Madison. The basic classes may be available in Outagamie or Fond du Lac Counties. It is already late to start planning for a January course and starting it in March was not well received. Also, more Education Committee members would be

needed to put on the classes. Roy Anne made a motion that as there is currently no MG advisor, and it will be the start of a new president's term, that the WCMGA not offer a 36-hour certification course but instead plan some specialized training opportunities for a minimum of 10 hours of continuing education. Bob seconded the motion. Approved.

Information will be obtained on certification classes in Fond du Lac or Outagamie counties and disseminated to members and potential members who are interested. This will be discussed at the September business meeting and suggestions for Winnebago County specialty training requested.

**August Garden Walks:** Bob made a motion to purchase a \$50 gift certificate to the Roxy for Sharon Solver for opening her farm for a MG tour. Linda Werner seconded the motion. Approved.

Bob made a motion to adjourn at 7:50 p.m. Stan seconded the motion. Approved.



## FALL FESTIVAL & PARADE

Anyone interested in being part of the Master Gardener contingent for the Park View annual parade please let me know so I can let Jan know. It is on Wednesday, September 12. Line up is at 1:30, the parade starts at 1:45 and is over by about 2:00. As you all know we have been a part of their party for many years. Don't let the word parade discourage you. The parade route is only the drive around the gazebo area. All of the movable residents are out to cheer.

Please join it if you aren't working that afternoon. We carry rakes or hoes and wear our gardening hats and a bandana smile and wave as we walk. It is fun to be a part of. Goodies are served after the March.

## What Am I?

By Bruce Abraham



I am a native, perennial Wisconsin plant of the Family **Asteraceae** (aster family); Genus **Symphotrichum**. My habitats are quite varied and include: bracken grasslands, cliff, pine barrens, prairie, sand barrens, sand dunes, savanna, and southern upland forest. I prefer sandy loam soil, but can tolerate sandy, rocky and clay soils. I grow up to 1-1/2' - 3' tall with a central stalk that becomes multi-branched at the inflorescence (def: flower or flower cluster). My coarse green, ovate, finely toothed leaves are approximately 3" long by 1" - 2-1/2" wide and typically found on the lower end of the plant. My light blue/lavender flowers measure 1/2" - 1" across and in clusters of 10 - 25. The weight of my inflorescence many times causes my branches to droop. I flower from August through October. Bees frequent my flowers as well as butterflies, moths, flies, and wasps. What Am I?

## An Explosion of Teasel

By Lawanda Jungwirth

Teasel is poised to become the newest invasive plant in our area. Three years ago there were two teasel plants in a field next to a house about a mile from my home. Two years ago there were four plants. Last year there were seven. A year ago, when I became aware of the possibility of the plant becoming invasive, I very tactfully informed the property owner of the existence of the plants and provided information about how to get rid of it. Unfortunately my warning and advice were ignored and this year there has been an explosion of teasel for a mile in each direction from these two plants. Here is an example of where one homeowner could have made a positive difference, but because of laziness or indifference has launched a major invasive plant problem.

I wrote about teasel in this newsletter about a year ago, but I am repeating some of the

information again this year as I feel this invasive will soon be a huge problem.

There are two types of teasel, common and cut-leaved, both of which are found in Wisconsin. Both types grow best in open, sunny spots and are most commonly seen along roadsides in heavily disturbed areas. Teasel can become a severe threat to native plants by spreading into prairies and sedge meadows.

Cut-leaved teasel's leaves have deep lobes and are broader than those of common teasel. The first year, a ground-level rosette is formed and the next year a rigid 4 to 7 foot stalk shoots up. The large flower head is spiny and oval-shaped. Common teasel's flowers are purple while cut-leaved teasel has white flowers.

Teasel flowers once and then dies, but before dying, each plant can produce 2,000 seeds. The seeds do not disperse far from the parent plant, but mowing equipment and flooding can spread them. Dried teasel is often used in dried flower arrangements and careless disposal of the arrangements also spreads the seeds.

Teasel is easy to control. Just cut the stalks shortly before they flower. They are unlikely to re-flower and will die at the end of the growing season. If the flowers have already opened, they should be cut and removed from the area, since seeds can mature on the stems after cutting. Cutting too early, before full bud stage, doesn't do any good because the plants will send up new flowering stalks. Seeds are apparently viable for only two years, so the flower-cutting method should produce results quite quickly.

If you do not know what teasel looks like, take a drive south of Oshkosh along Hwy. 41. It is the tall spiny plant growing in all the roadside ditches. Another bad infestation can be found in the Neenah/Menasha area where Hwy. 41 and Hwys. 10/441 intersect.





## Wisconsin Master Gardeners to host Annual Conference in Eau Claire

October 5-6, 2007

**Eau Claire, Wisconsin** – “Back to our Roots” is the theme for the Wisconsin Master Gardener’s 2007 Annual Conference that will be held October 5-6 in Eau Claire.

Anyone with an interest in gardening is invited to attend and participate in the networking, learning and exchange of ideas.

Keynote speaker on Friday evening will be Susan Davis Price, author of “Growing Home, Stories of Ethnic Gardening,” a compilation of stories on why and what people plant in their gardens.

On Saturday, the conference will feature breakout sessions on a variety of gardening topics ranging from organic gardening, vines, perennials & shrubs, to edible landscaping, orchids, native plants, and evening gardens. Other notable speakers will be Cathy Barash, Rob Bursick ( Dragonfly Gardens), Mark Dwyer (director-Rotary Gardens), Mike Heger (Ambergate Gardens), Rory Nelson Klick (Community Gardens), Dave Wanninger (Beaver Creek Nursery), and Tom Martell (Martell Vineyards), plus others. Many will be amongst the numerous vendors as well, and will have a good bit of material to select from.



The Wisconsin Master Gardener’s “Back to our Roots” conference will be held at the Plaza Hotel & Suites, 1202 W. Clairemont Avenue in Eau Claire.

Conference registration fee is \$20 for Friday evening and \$50 for Saturday. Pre-registration is needed by September 30.

Visit

[www.hort.wisc.edu/mastergardener/conference/conf07.htm](http://www.hort.wisc.edu/mastergardener/conference/conf07.htm) for complete conference and registration information, or contact conference chair Rolf Utegaard at (715) 834-0065.

### Answer to What Am I?

I am an erect perennial forb/herb -  
**Symphotrichum oolentangiensis Riddell;**  
common name: Sky blue-aster, azure aster, prairie heart-leaved aster.

References: <http://www.botany.wisc.edu/wisflora/> and associated links



### JUST A WORD

*Linda Baeten*

I was fortunate to attend the garden walks in August. I thank Audrey Ruedinger for all her hard work arranging these events for us. It is always so enlightening to see what other gardeners do. I've come away with a few new ideas regarding horticulture from Suzette Lizotte's permaculture garden.

Marge Bolding emailed a lovely picture of the Sharon Solver farm. The sweeping landscapes were a delight to behold. Unfortunately, including that photo made our newsletter too large to send. Too many KB's! I either have to get smarter about downloading actual photos, or we have to assume everyone out there has the computer capability to receive such a large document as our newsletter has the potential to become.

I'm working to improve our Newsletter now that we are sending it by email. Feedback is appreciated. If anyone has trouble opening the newsletter please let me know 920-232-1224.

Linda Baeten

## SEPTEMBER TASKS

### Houseplants, Perennials and Annuals

- Allow rose hips to stay on plants to aide in winter protection. Watch for black spots on roses, and remove infected leaves.
- Cut back perennials after frost.
- **Week 1.** Lift gladioli corms when leaves begin to brown; dry in sun for a few days.
- Divide most perennials except asters and mums that haven't bloomed.
- Divide and replant peony roots until October 15. Avoid planting too deeply. Mulch after ground freezes.
- **Week 2.** Bring coleus, geraniums, caladium and begonias indoors.
- Place amaryllis in cool basement for a three-month resting period.
- To set flower buds on Christmas cactus, place in the dark for 15 hours (overnight) for six to eight weeks. It helps to have them at 55F at night.
- **Week 3.** Sow snapdragons , cornflowers and other hardy annuals a few weeks before the first frost date.

### Vegetables and Herbs

- **Week 1.** Remove newly set tomato blossoms and new growth because fruit won't have time to mature..
- Sow annual ryegrass or oats for winter cover and place green manure in beds that won't be planted until late in spring.
- Remove all weeds from garden before they go to seed.
- **Week 2.** Pinch out the growing points at the top of Brussels sprout stems to bottom sprouts will reach maturity.
- Cover the garden when frost is predicted for up to another month of growth. Water plants well for greater frost protection.
- **Week 3.** Dig and pot parsley, chives and tender herbs for transfer indoors to sunny window.
- **Week 4.** Harvest carrots, beets and turnips before first frost kills foliage
- Gather squash, pumpkins and gourds when ripe and before damaged by frost. Leave 2-inch stem on vegetable for better storage.
- Clear garden beds immediately after harvest. Destroy any diseased plants by burning, composting in a hot pile, or sealing in containers for disposal.

### Lawns, Trees and Shrubs.

- **Week 1.**
- Early September is the latest time to plant spring-flowering shrubs.
- Fertilize lawn if applying fertilizer three or four times per year.
- Aerate lawn when temperature is 60 to 70 F.
- **Week 2.** Stop planting evergreens.

### Fruits and Berries

- Harvest pears when still light green, and separate fruit from branch with slight twisting motion.
- Harvest grapes. Fertilize with one cup bone meal per plant.
- Harvest apples. Rake up leaves and fallen fruit to control disease and insect problems next year. Be careful not to injure long-lived fruiting spurs when harvesting.
- Cut out spent raspberry and blackberry canes after fruiting.

# VOLUNTEER OPPORTUNITIES

## ☞ GENERAL MEMBERSHIP MEETINGS

Hours spent at the General Membership meetings count!  
Come and see how you can be involved.

## ☞ PAINE GARDENS

Contact Pat Behm or Bob Potter

## ☞ PARK VIEW CUTTING GARDEN

Contact Rob Robinson.

## ☞ PARK VIEW-MG LIASON

VACANT! SEE Linda Tobey

## ☞ PARK VIEW VEGETABLE GARDEN

The Vegetable Garden contact Susan Steinhilber  
235-1031 or email [steinsb@northnet.net](mailto:steinsb@northnet.net)

## ☞ COMMUNITY GARDENS - Menasha

Contact Ruth Freye

## ☞ COMMUNITY GARDEN Seed Trials

Contact Julie 420-5802 or Ellen 303-9578

## ☞ PLANT HEALTH ADVISORS

Contact Curt Reese at 426-4992.

## ☞ BE A GUEST SPEAKER

Contact Linda Toby.

## ☞ TRIPS

Contact Roy Anne Moulton of the Education Committee

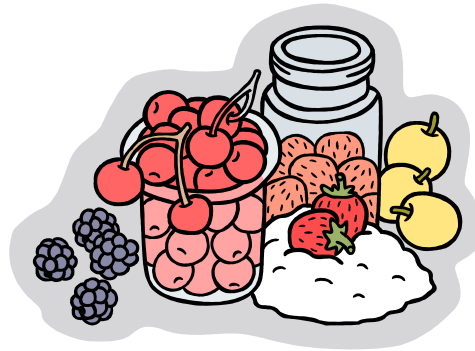
## ☞ INVASIVE SPECIES ED & CONTROL

Contact Lawanda Jungwirth.

## ☞ MENASHA NATURE'S WAY PROJECT

Contact Gale Davey

## ☞ LOOK FOR MORE PROJECTS TO COME!



# SEPTEMBER 2007

(THIS CALENDAR CAN BE A HANDY WAY TO KEEP TRACK OF YOUR HOURS)

SUN	MON	TUE	WED	THR	FRI	SAT
						1
2	3 LABOR DAY	4 6:00 BOARD MTG @ Coughlin Center	5	6	7	8
9	10	11 6:15 MG BUSINESS MTG  NEW MOON ●	12	13	14	15
16	17	18	19	20	21	22 AUTUMNAL EQUINOX
23	24	25	26	27	28	29
30			FULL MOON ○			

# Annual Fall Festival

The date is set!  
Please mark your calendar for

**Wednesday, September 12, 2007**

at the Park View Health Center for

**“Our 15th Annual Fall Festival”**

The parade starts at 1:45 pm sharp.  
Music, fun and refreshments will follow.

Please call Jan at 237-6931 if you will be available to volunteer in the afternoon to assist staff escorting residents outdoors for the parade and entertainment.

Volunteers are needed from approximately  
1:00 pm—4:00 pm